



EVOMAQ[®]
EQUIPAMENTOS

CATALOG

E60/20

CONTINUOUS FLIGHT AUGER
DRILL UNDER EXCAVATOR CHASSIS



**CONSTANT
EVOLUTION**

CONTINUOUS FLIGHT AUGER DRILL (CFA DRILL)

EVOMAQ®

E60/20

SPECIAL FEATURES

- CABIN WITH MORE COMFORT AND TECHNOLOGY
- STRONG AND COMPACT DRILLING HEAD
- 360° ROTATION
- EXCLUSIVE HYDRAULIC VISE FOR ALL DIAMETERS



COMPONENTS

- CONTROL PANEL
- MONITORING COMPUTER
- HYDRAULIC TOWER ADJUSTMENTS
- CONVEYORS
- TURRET FOOT



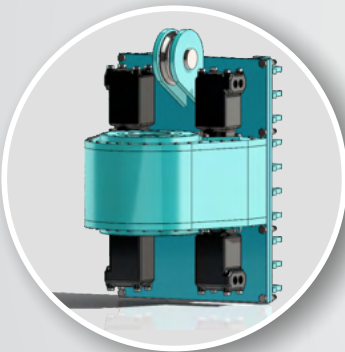
SPECIAL FEATURES

WWW.EVOMAQ.COM.BR



CABIN WITH MORE COMFORT AND TECHNOLOGY

Experience the full spectrum of comfort and cutting-edge technology that the excavator chassis has to offer. In this version, you'll also notice a slight expansion of interior space. Take a closer look!



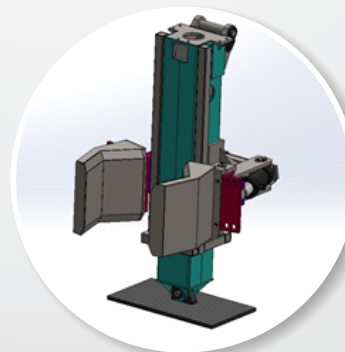
DRILLING HEAD

Designed to work with 4 hydraulic motors reaching a maximum torque of 5,000 kgfm, and still compact, the E60/20 offers its customers less component wear and a significant increase in production. All this without compromising its greatest advantage, which is the execution of piles next to neighboring buildings.



360° ROTATION

EVOMAQ has used techniques and features to provide a 360° ROTATION around the equipment to maximize use, productivity and safety.



EXCLUSIVE HYDRAULIC VISE FOR ALL DIAMETERS

To keep the auger alignment during the drilling, the drill of EVOMAQ® has an exclusive hydraulic vise system for all diameters, facilitating and ensuring enhanced safety for individuals involved in the operation.

COMPONENTS

WWW.EVOMAQ.COM.BR



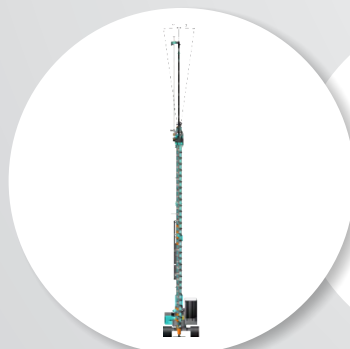
CONTROL PANEL

With an easy-to-operate, intuitive and strategically located instrument panel, the operator has complete control over the equipment.



MONITORING COMPUTER

The EVOMAQ® Continuous Flight Auger Drill (CFA) has a high-tech monitoring computer that generates accurate, real-time data on drilling and concreting, through detailed graphics, providing reliability for the customer.



TOWER SIDE SLOPE



TOWER ELEVATION

HYDRAULIC TOWER ADJUSTMENTS

In addition to greater agility, the hydraulic adjustments of the tower are essential for the safe displacement of the EVOMAQ drill rig on construction site.

When in movement, the tower can be tilted sideways and backwards, maintaining the center of gravity and providing even more safety for the operation.

COMPONENTS

WWW.EVOMAQ.COM.BR

CONVEYORS



At EVOMAQ, meticulous planning allows us to select the ideal chassis or tracks model that seamlessly adapts to various soil types, enhancing maneuverability and overall performance.

TURRET FOOT



In order to provide greater stability and safety when executing the pile, the turret foot has large dimensions, ensuring higher machine stability and precision when the auger is removed.

TECHNICAL SPECIFICATIONS

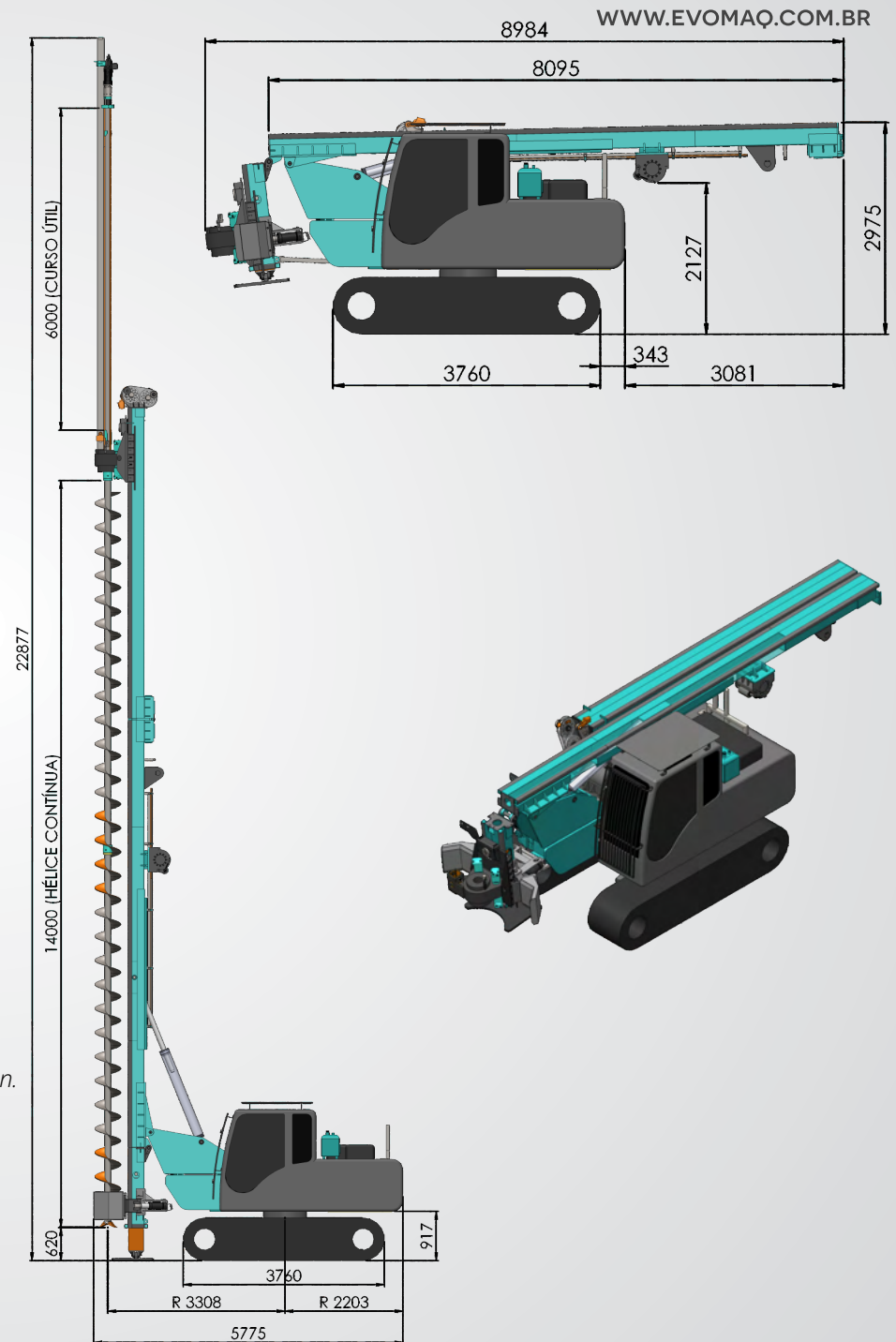
| | |
|---------------------------------------|--------------|
| Minimum drilling diameter | 250 mm |
| Maximum drilling diameter | 600 mm |
| Maximum drilling depth | 20m (14 + 6) |
| Auger Rotation | 36 RPM |
| Drilling torque | 5.000 kgf.m |
| Extraction force | 32.000 kfg |
| Overall equipment width (transport) | 2690mm* |
| Overall equipment width (operational) | 2690mm* |
| Total track shoe width | 600mm |
| Track length | 3760mm* |
| Total equipment weight (transport) | 20 Ton* |
| Engine power | 113cv* |
| Total Height (Work) | 23192mm* |
| Total Height (Transport) | 2990mm* |
| Total Length (Work) | 5875mm* |
| Total Length (Transport) | 9377mm* |

Excavators for adaptation



* Technical specifications, dimensions and weight of the equipment, depending on the model chosen.

* For other chassis manufacturers, project development will be required.





EVOMAQ[®]
EQUIPAMENTOS

MOGI MIRIM/SP
tel.: (+55) 19 3806.1478 | 19 97158.9961
e-mail: vendas@evomaq.com.br

www.evomaq.com.br



EXPLORE OUR LINE OF CONCRETE PUMPS FOR ADDITIONAL INSIGHTS



CONCRETE
AUTO PUMP
EVOMAQ[®]



BT
CONCRETE PUMP
EVOMAQ[®]



CRAWLER
PUMP
EVOMAQ[®]



STATIONARY
CONCRETE PUMP
EVOMAQ[®]