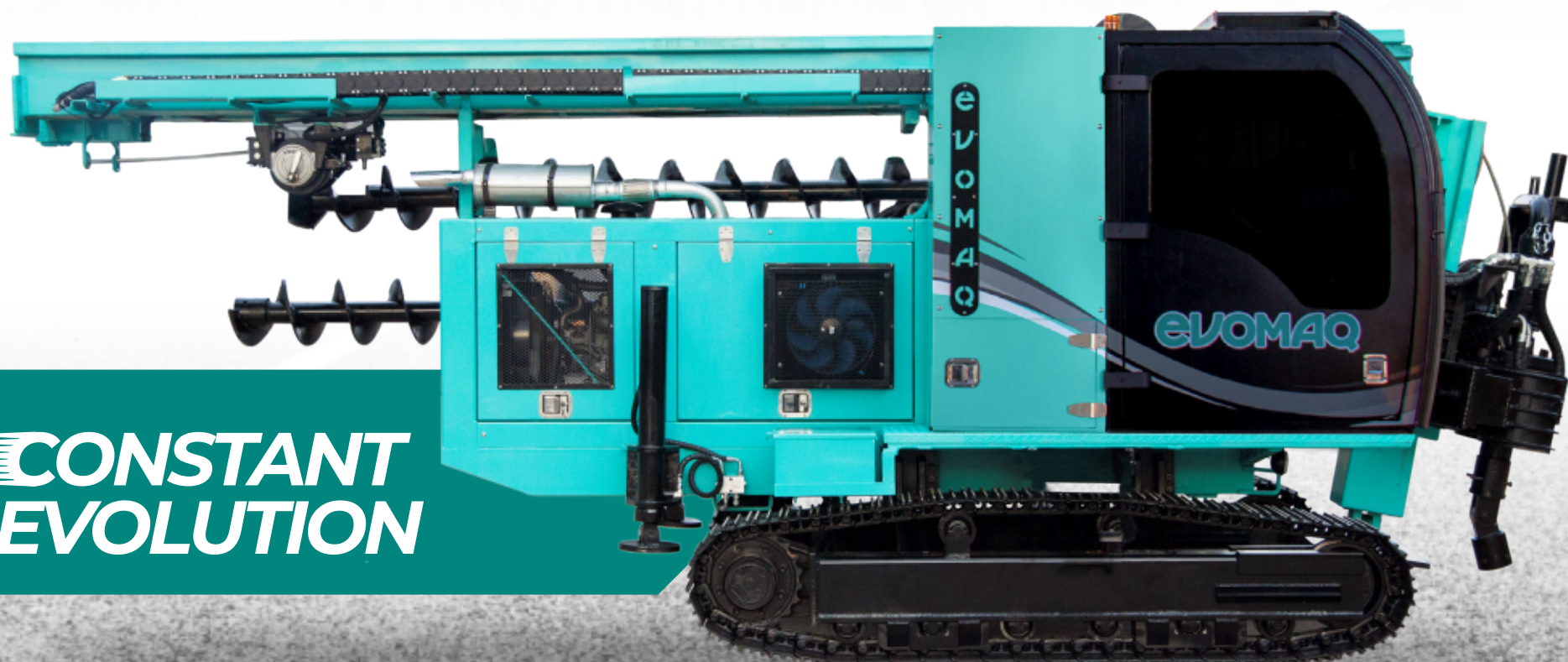




**evوماق®**  
EQUIPAMENTOS

# CATALOG **P50/17**

THE 1ST SMALL-SIZED CONTINUOUS  
FLIGHT AUGER DRILL (CFA) IN BRAZIL



**CONSTANT  
EVOLUTION**

# CONTINUOUS FLIGHT AUGER DRILL (CFA DRILL) EVOMAQ®

## **P50/17**

### **SPECIAL FEATURES**

- POWERFUL MWM TURBO DIESEL ENGINE
- STRONG AND COMPACT DRILLING HEAD
- AUGER RACK
- HIGH PRESSURE WASH PUMP
- EXCLUSIVE HYDRAULIC VISE FOR ALL DIAMETERS



# COMPONENTS

- MONITORING COMPUTER
- CONTROL PANEL
- HYDRAULIC TOWER ADJUSTMENTS
- CONVEYORS
- TURRET FOOT
- HYDRAULIC LEVELING LEGS



[WWW.EVOMAQ.COM.BR](http://WWW.EVOMAQ.COM.BR)



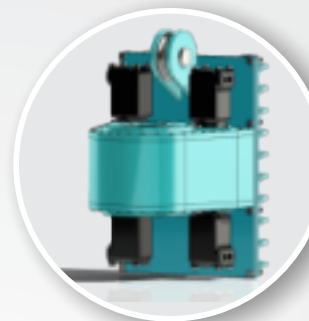
# DIFERENCIAIS

WWW.EVOMAQ.COM.BR



## ENGINE

The EVOMAQ® Continuous Flight Auger (CFA) is equipped with a powerful MWM turbo engine diesel, and is offered with 215 hp, designed to provide strength and performance.



## DRILLING HEAD

Designed to operate with four hydraulic motors, this equipment boasts an impressive maximum torque of 5.000kgf.m, while retaining its compact design. The P50/17 not only ensures reduced wear on components but also significantly enhances production. Its standout feature lies in its ability to execute piles in close proximity to other constructions, making it a versatile and efficient choice.



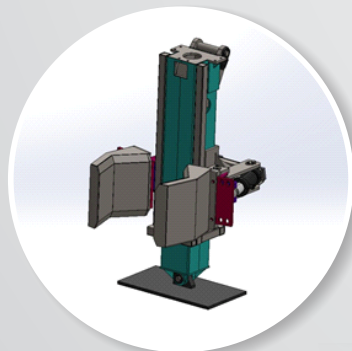
## AUGER RACK

A robust and reinforced racking system with ratchets and steel cable latches, which guarantees greater transport security during assembly and handling.



## HIGH PRESSURE WASH PUMP

Maintaining cleanliness in your equipment is the initial step toward optimal performance and long-lasting durability. That's why the EVOMAQ® continuous flight auger (CFA) includes a high-pressure water pump, simplifying the process of equipment cleaning and maintenance.



## EXCLUSIVE HYDRAULIC VISE FOR ALL DIAMETERS

To keep the auger alignment during the drilling, the drill of EVOMAQ® has an exclusive hydraulic vise system for all diameters, facilitating and ensuring enhanced safety for individuals in the operation.

# COMPONENTES

WWW.EVOMAQ.COM.BR

## CONTROL PANEL



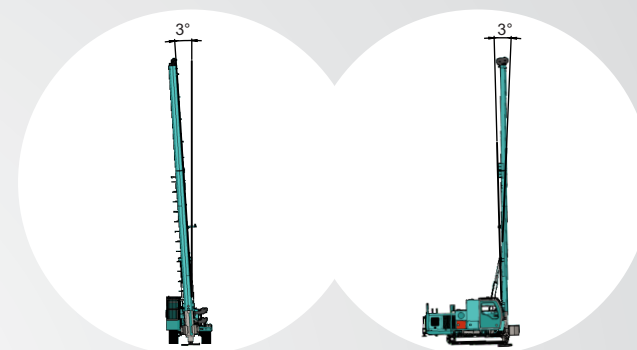
With an easy-to-operate, intuitive and strategically located instrument panel, the operator has complete control over the equipment.

## MONITORING COMPUTER



The EVOMAQ® Continuous Flight Auger Drill (CFA) has a high-tech monitoring computer that generates accurate, real time data on drilling and concreting, through detailed graphics, providing reliability for the customer.

## HYDRAULIC TOWER ADJUSTMENTS



In addition to greater agility, the hydraulic adjustments of the tower are essential for the safe displacement of the EVOMAQ® drill rig on construction site. When in movement, the tower can be tilted sideways and backwards, maintaining the center of gravity and providing even more safety for the operation.

## CONVEYORS



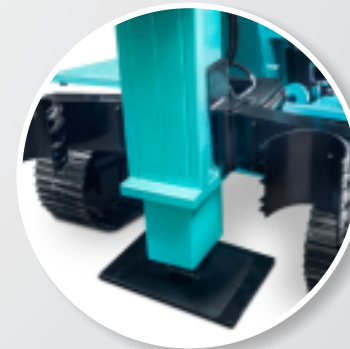
The conveyor of EVOMAQ® was designed for complex and muddy lands, facilitating its mobility on the construction site.

## HYDRAULIC LEVELING LEGS



Equipped with hydraulic leveling legs, the EVOMAQ® CFA drill keeps the equipment level and the pile in the plumb line, allowing for the better quality and safety in the execution of the piles.

## TURRET FOOT



In order to provide greater stability and safety when executing the pile, the turret foot has large dimensions, ensuring higher machine stability and precision when the auger is removed.

# EVOLUTION

## MOBILIZATION, TRANSPORT AND ASSEMBLY

The primary innovation of the EVOMAQ® Continuous Flight Auger (CFA) lies in its exclusive design, crafted to streamline processes and minimize mobilization costs. This equipment can be easily transported using regular trucks, eliminating the need for oversized transport platforms.

The EVOMAQ® drill is ingeniously designed to transport its augers, eliminating the need for an additional truck or crane. Moreover, its assembly operation is streamlined and remarkably swift, taking an average time of just one hour, accelerating the commencement of work on the site.



[WWW.EVOMAQ.COM.BR](http://WWW.EVOMAQ.COM.BR)



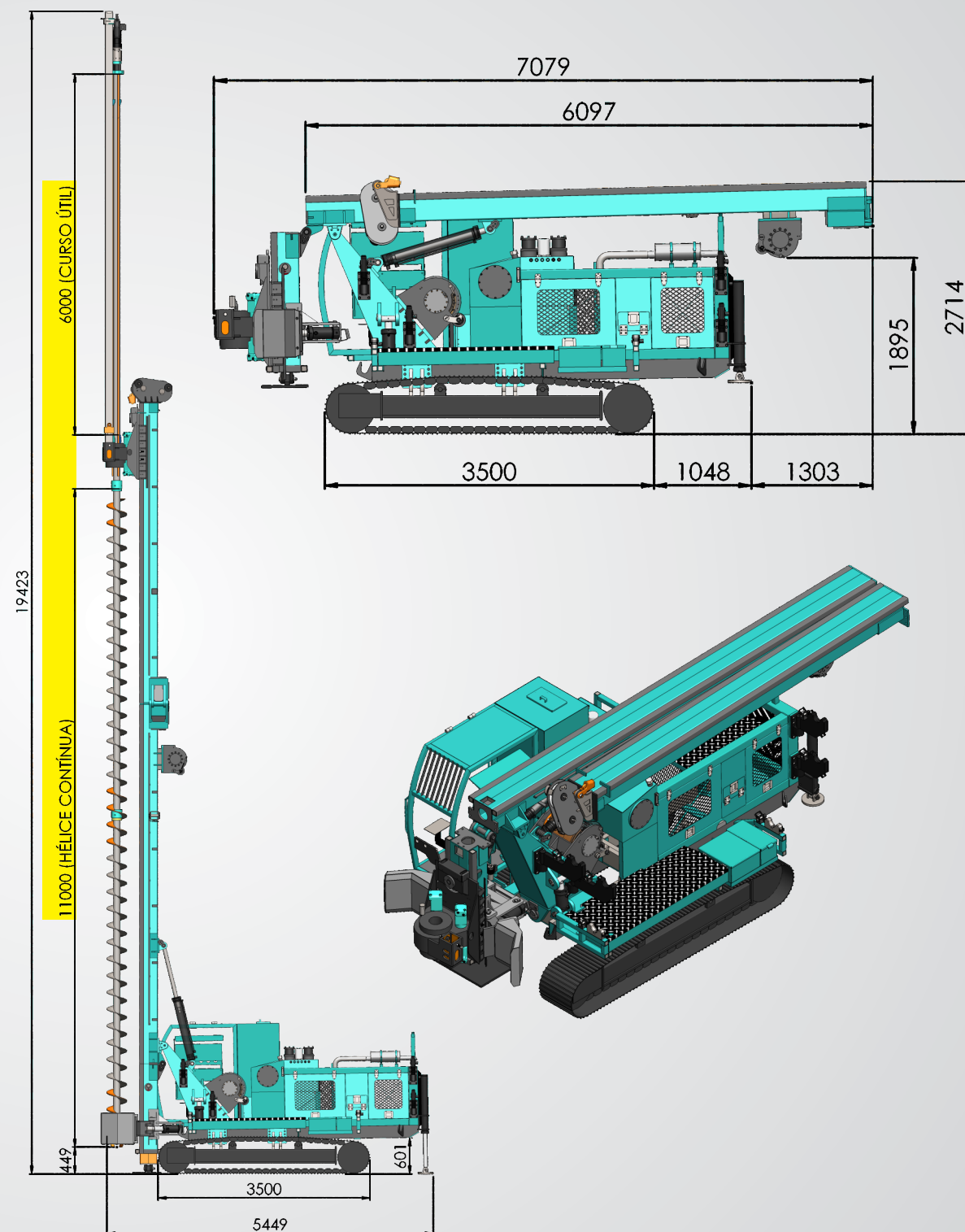
Tailored for medium and small-scale projects, the EVOMAQ® Continuous Flight Auger (CFA) seamlessly integrates unprecedented robustness and practicality. Its compact design is crafted to ease transportation, particularly in bustling urban centers, substantially curbing mobilization costs to the site and ensuring enhanced drilling agility.

Another special feature of EVOMAQ® equipment is its minimal noise and vibration levels, allowing it to operate close to the existing buildings on the construction site.



## TECHNICAL SPECIFICATIONS

Minimum drilling diameter	250 mm
Maximum drilling diameter	500 mm
Maximum drilling depth	17m (11 + 6)
Rotação do Trado	40 RPM
Maximum torque	5.000 kgf.m
Extraction force	32.000 kgf
Overall equipment width (transport)	2370mm
Overall equipment width (operational)	2370mm
Total track shoe width	500mm
Track length	3500mm
Maximum transfer speed	2km/h
Total equipment weight (transport)	11.400 Ton
Engine	MWM 215cv
Altura (Trabalho)	19423mm
Altura (Transporte)	2714mm
Comprimento (Trabalho)	5449mm
Comprimento (Transporte)	7079mm





**EVOMAQ®**  
EQUIPAMENTOS

MOGI MIRIM/SP  
tel.: (+55) 19 3806.1478 | 19 97158.9961  
e-mail: vendas@evomaq.com.br

[www.evomaq.com.br](http://www.evomaq.com.br)



EXPLORE OUR LINE OF CONCRETE PUMPS FOR ADDITIONAL INSIGHTS



CONCRETE  
AUTO PUMP  
EVOMAQ®



BETON  
CONCRETE PUMP  
EVOMAQ®



CRAWLER  
PUMP  
EVOMAQ®



STATIONARY  
CONCRETE PUMP  
EVOMAQ®