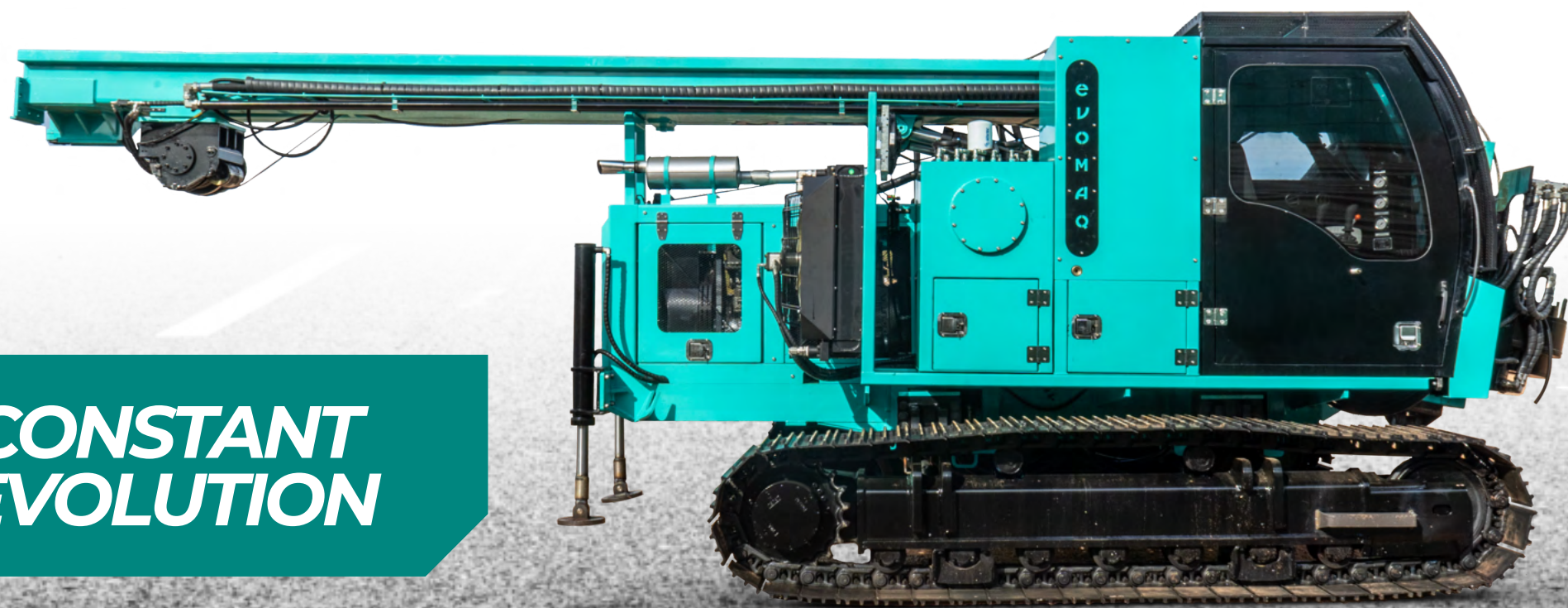




EVOMAQ[®]
EQUIPAMENTOS

CATALOG P60/20

THE 1ST SMALL-SIZED CONTINUOUS
FLIGHT AUGER DRILL (CFA) IN BRAZIL



**CONSTANT
EVOLUTION**

CONTINUOUS FLIGHT AUGER DRILL (CFA DRILL) EVOMAQ®

P60/20

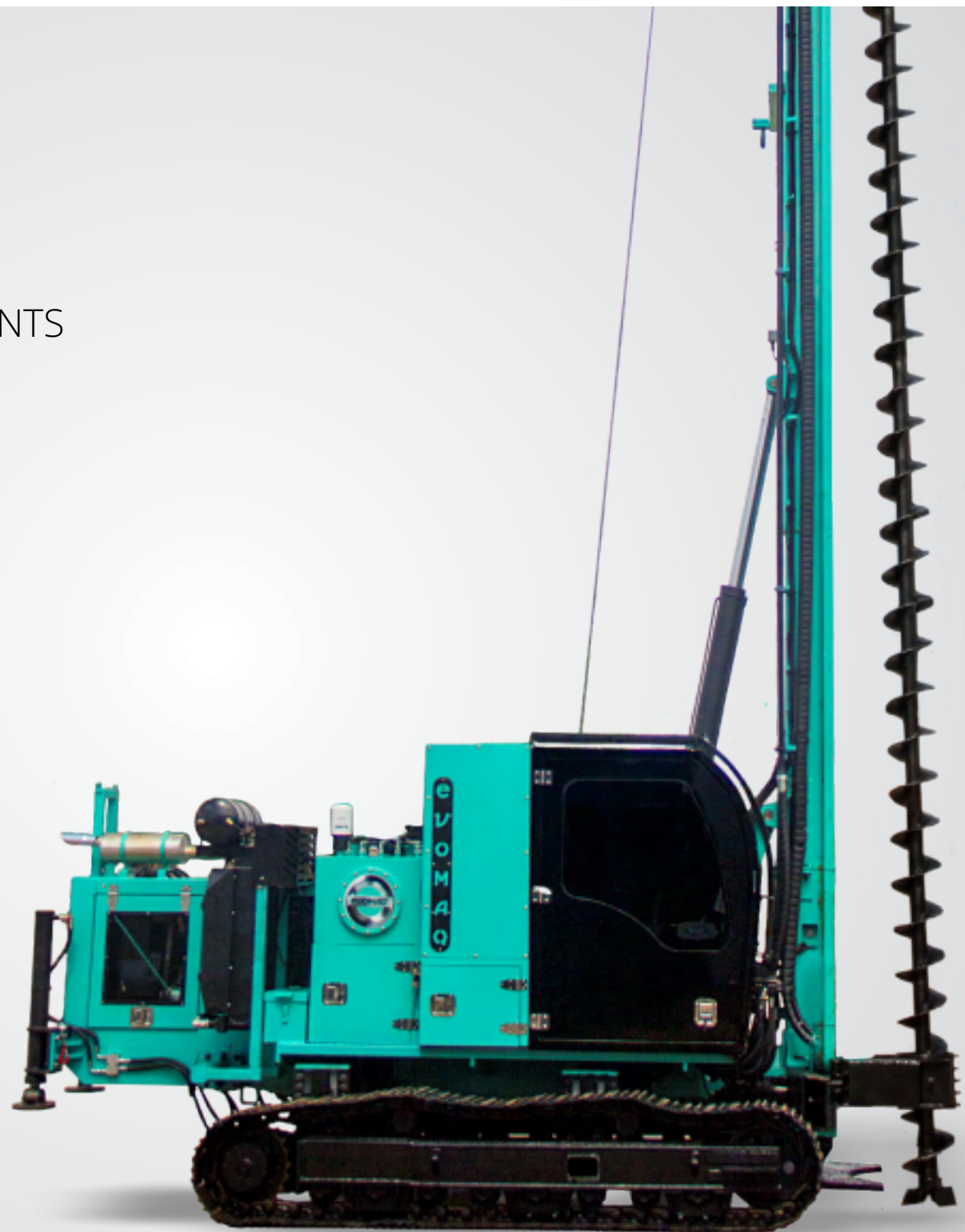
SPECIAL FEATURES

- POWERFUL MWM TURBO DIESEL ENGINE
- STRONG AND COMPACT DRILLING HEAD
- AUGER RACK
- HIGH PRESSURE WASH PUMP
- EXCLUSIVE HYDRAULIC VISE FOR ALL DIAMETERS



COMPONENTS

- CONTROL PANEL
- MONITORING COMPUTER
- HYDRAULIC TOWER ADJUSTMENTS
- CONVEYORS
- TURRET FOOT
- HYDRAULIC LEVELING LEGS
- AIR-CONDITIONED CABIN
- EXTENDABLE TRACKS



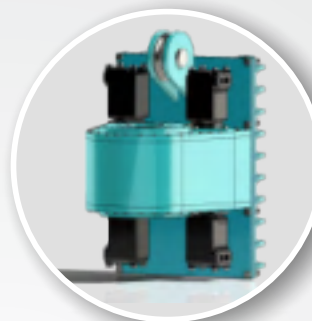
SPECIAL FEATURES

WWW.EVOMAQ.COM.BR



ENGINE

The EVOMAQ® Continuous Flight Auger P60/20 boasts a powerful MWM 6-cylinder intercooled turbo diesel engine, available in a 215 hp version. Crafted to deliver both strength and performance, it comes with a clearance limit meticulously set to ensure the engine operates at its optimal capacity.



DRILLING HEAD

Designed to operate with four hydraulic motors, this equipment boasts an impressive maximum torque of 5.000 kgf.m, while retaining its compact design. The P60/20 not only ensures reduced wear on components but also significantly enhances production. Its standout feature lies in its ability to execute piles in close proximity to other constructions, making it a versatile and efficient choice.



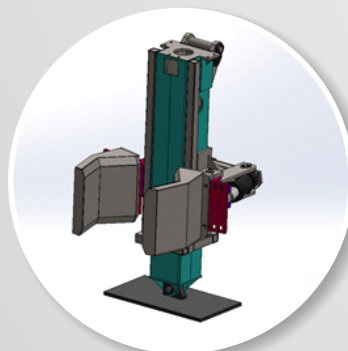
AUGER RACK

A robust and reinforced racking system with ratchets and steel cable latches, which guarantees greater transport security during assembly and handling.



HIGH PRESSURE WASH PUMP

Maintaining cleanliness in your equipment is the initial step toward optimal performance and long-lasting durability. That's why the EVOMAQ® continuous flight auger (CFA) includes a high-pressure water pump, simplifying the process of equipment cleaning and maintenance.



EXCLUSIVE HYDRAULIC VISE FOR ALL DIAMETERS

To keep the auger alignment during the drilling, the drill of EVOMAQ® has an exclusive hydraulic vise system for all diameters, facilitating and ensuring enhanced safety for individuals involved in the operation.

COMPONENTES

WWW.EVOMAQ.COM.BR

CONTROL PANEL



With an easy-to-operate, intuitive and strategically located instrument panel, the operator has complete control over the equipment.

MONITORING COMPUTER

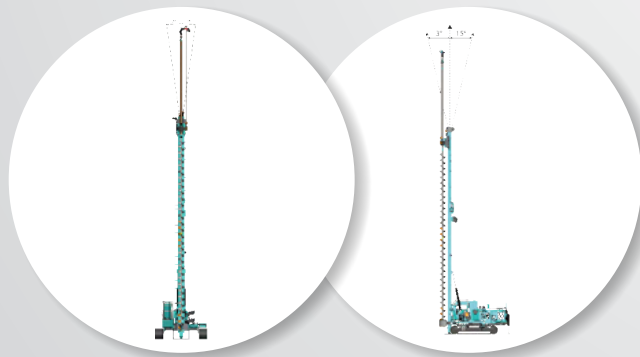


The EVOMAQ® Continuous Flight Auger Drill (CFA) has a high-tech monitoring computer that generates accurate, real time data on drilling and concreting, through detailed graphics, providing reliability for the customer.

CONVEYORS



The conveyor of EVOMAQ® was designed for complex and muddy lands, facilitating its mobility on the construction site.



TOWER SIDE - SLOPE

TOWER ELEVATION

HYDRAULIC TOWER ADJUSTMENTS

In addition to greater agility, the hydraulic adjustments of the tower are essential for the safe displacement of the EVOMAQ® drill on construction site. When in movement, the tower can be tilted sideways and backwards, maintaining the center of gravity and providing even more safety for the operation.

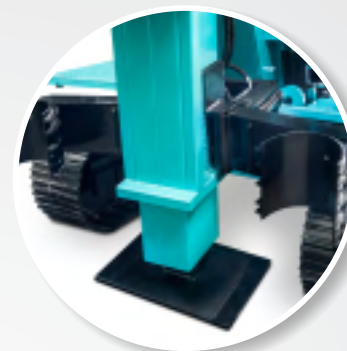
COMPONENTES

WWW.EVOMAQ.COM.BR



HYDRAULIC LEVELING LEGS

Equipped with hydraulic leveling legs, the EVOMAQ® CFA drill keeps the equipment level and the pile in the plumb line, allowing for the better quality and safety in the execution of the piles.



TURRET FOOT

In order to provide greater stability and safety when executing the pile, the turret foot has large dimensions, ensuring higher machine stability and precision when the auger is removed.



CABIN

Consistently paying attention to our customers' feedback, we've introduced a custom-designed cabin exclusively tailored for our continuous flight auger (CFA). This cabin not only enhances comfort and safety but also harmonizes seamlessly with the overall design, elevating the aesthetics and overall value of our drill rigs.

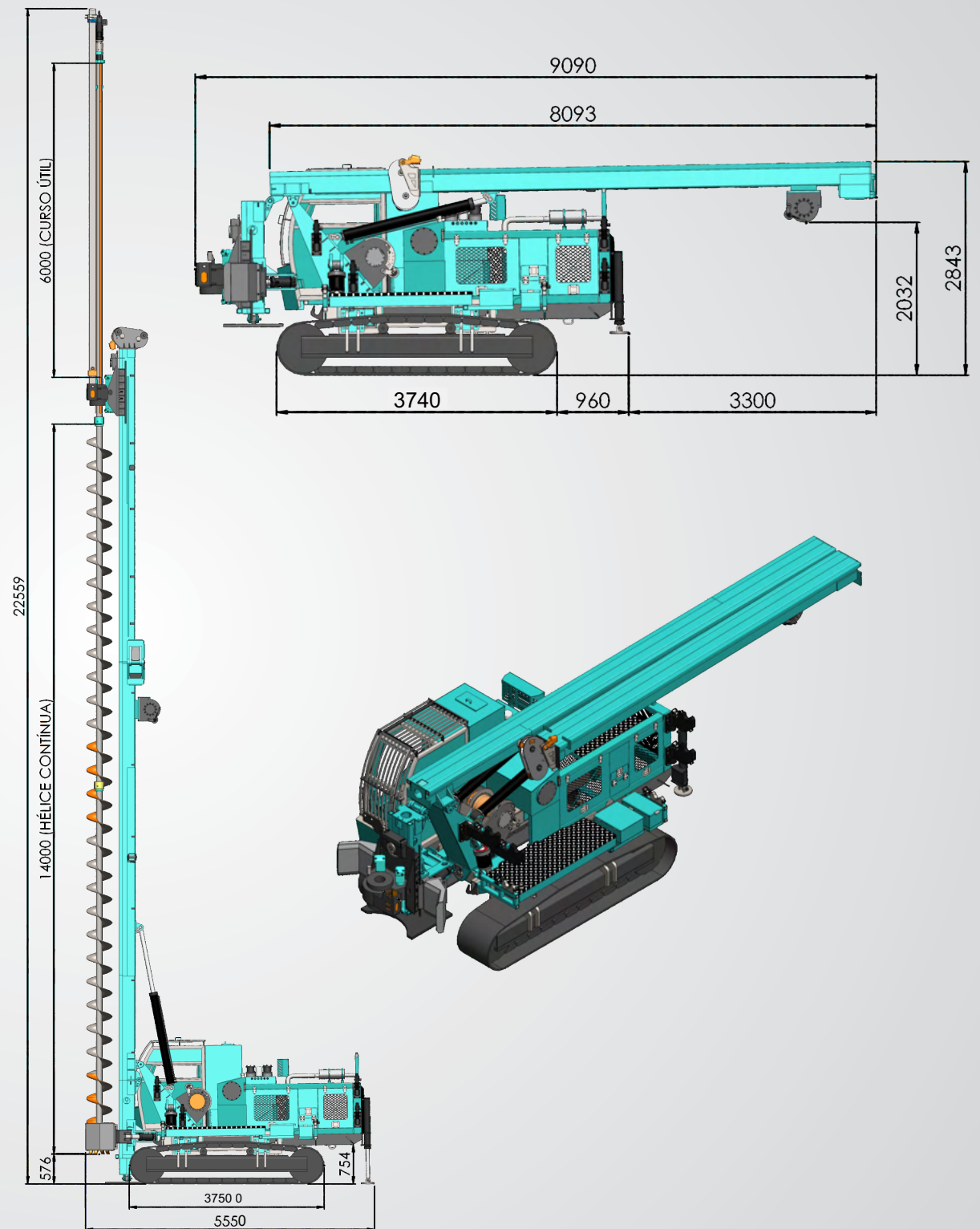


EXTENDABLE TRACKS

To achieve the 20-meter drilling capacity of our equipment, we designed larger, more resistant and, above all, more stable tracks, providing greater safety in operations within construction sites. We also installed a hydraulic device that widens the tracks by more than 1 meter, offering even more stability during maneuvers and carrying out work.

TECHNICAL SPECIFICATIONS

Minimum drilling diameter	250 mm
Maximum drilling diameter	600 mm
Maximum drilling depth	20m (14 + 6)
Auger rotation	32 RPM
Maximum torque	5.000 kgf.m
Extraction force	32.000 kfg
Overall equipment width (transport)	2547mm
Overall equipment width (operational)	3747mm
Total track shoe width	600mm
Track length	3740mm
Maximum transfer speed	2km/h
Total equipment weight (transport)	16 Ton
Engine	215cv
Total Height (Work)	22559mm
Total Height (Transport)	2843mm
Total Length (Work)	5550mm
Total Length (Transport)	9090mm





EVOMAQ[®]
EQUIPAMENTOS

MOGI MIRIM/SP
TEL.: (+55) 19 3806.1478 | 19 97158.9961
E-MAIL: VENDAS@EVOMAQ.COM.BR

WWW.EVOMAQ.COM.BR



EXPLORE OUR LINE OF CONCRETE PUMPS FOR ADDITIONAL INSIGHTS



CONCRETE
AUTO PUMP
EVOMAQ[®]



BT
CONCRETE PUMP
EVOMAQ[®]



CRAWLER
PUMP
EVOMAQ[®]



STATIONARY
CONCRETE PUMP
EVOMAQ[®]